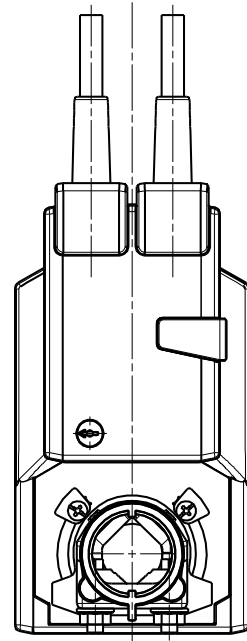
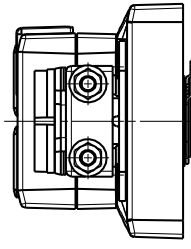
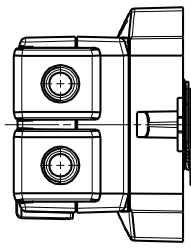


SPZLA-MF
 SPZLA-MF
 SPZLA-MF
 SPZLA-MP
 SPZLA-LUN
 SPZLA-RO
 SPZLA-PC
 SPZLA-PA



SPZ30ASR



Notes: Dimensions are in millimeters unless otherwise specified.
 Drawn according to the DIN 3rd Edition.
 All rights reserved. No part of this document may be reproduced without written permission from the copyright holder.

General tolerances in accordance with ISO 2768-MK.

1. The manufacturer is responsible for the design and construction of the product.
 2. The manufacturer is responsible for the safety of the product.
 3. The manufacturer is responsible for the quality of the product.

KERNBERG NEMIBACK
 reversible clamp

Date	Name	Document description
08/03/2017	WF	SM_230A_standard
Author		
Scale	1:1	
Version	11	

Document number: SM_230A_standard



Material specification

not released for production

Drawn	08/03/2017	Der. no.	01
Author		Rev. no.	01
Scale	1:1	Rev. no.	01
Version	11	Rev. no.	01